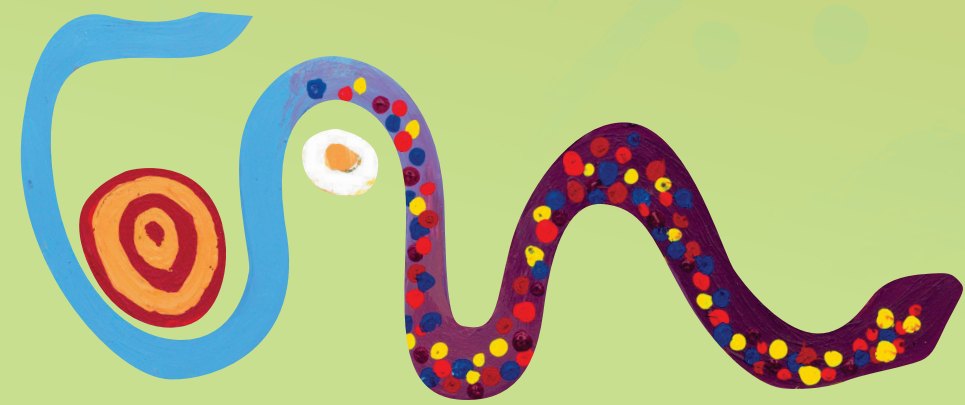




THE LIME NETWORK

Leaders in Indigenous Medical Education



INDIGENOUS STUDENT & COMMUNITY BURSARIES LIME CONNECTION VI

Knowledge Systems, Social Justice and Racism
in Health Professional Education

11-13 August 2015 Townsville, Australia

STUDENT & COMMUNITY BURSARIES

The sixth LIME CONNECTION will be held in Townsville, Australia on 11-13 August 2015.

To support participation of students and community members in LIME CONNECTION VI, bursary places will be offered to Aboriginal, Torres Strait Islander and Māori medical students and community members working with medical schools, with a strong interest in Indigenous health. Indigenous medical students are also encouraged to submit an abstract to present at LIME CONNECTION VI. Students who have submitted a successful abstract will be given priority for bursary funding.

Each bursary will cover the costs of the pre-conference educational visit, registration, travel, accommodation and meals.

BURSARY APPLICATIONS CLOSE 12 APRIL 2015

For eligibility criteria and application forms,
please visit the LIME Network website at
www.limenetwork.net.au or contact us:

E: lime-network@unimelb.edu.au

T: +61 3 9035 8294.



Student and Community Bursary Recipients at LIME Connection V in Darwin 2013.
Photo: Fiona Morrison

"The whole event was very inspiring and being around Indigenous people throughout the world was a major highlight. The connection has made me more passionate to undertake further studies in the field of Indigenous health"

Bursary recipients' feedback, 2013.

LIME CONNECTION VI is hosted by James Cook University and is held under the auspices of Medical Deans Australia and New Zealand, the Australian Indigenous Doctors' Association (AIDA) and Te Ohu Rata O Aotearoa (Te ORA) - Māori Medical Practitioners Association.

LIME CONNECTION VI student and community bursaries have been funded by Medical Schools across Australia and Aotearoa/New Zealand. The LIME CONNECTION is an outcome of the LIME Network Project, which is supported by financial assistance from the Australian Government Department of Health.